

# doona™

## ISOFIX Base. User Guide



ECE R44/04  
ISOFIX Class E  
Group 0+  
Up to 13kg  
Language: English

50262762



# Table of contents.

<b>01/</b>	
<b>Vital information / Warnings</b> .....	7
<b>02/</b>	
<b>Suitability</b> .....	10
<b>03/</b>	
<b>Product overview</b> .....	11
<b>04/</b>	
<b>Use in the vehicle</b> .....	12
<b>05/</b>	
<b>Installing the Doona ISOFIX Base in the vehicle</b> .....	15
5.1. Securing the Doona ISOFIX Base in your vehicle .....	15
5.2. Removing the Doona ISOFIX Base from your vehicle.....	18
<b>06/</b>	
<b>Installing and removing the Doona Car Seat from the Doona ISOFIX Base</b> .....	20

6.1. Securing the Doona Car Seat on the Doona ISOFIX Base .....	20
6.2 Removing the Doona Car Seat from the Doona ISOFIX Base .....	23
<b>07/</b>	
<b>Car fitting List</b> .....	25
<b>08/</b>	
<b>Care instructions</b> .....	26
8.1. Cleaning .....	26
<b>09/</b>	
<b>Two-year warranty</b> .....	27
<b>10/</b>	
<b>Warranty Card</b> .....	29

Congratulations on choosing Simple Parenting's Doona as your baby's safety and mobility solution.

In order to protect your baby, and allow easy use of the Doona inside and outside of the car, the Doona ISOFIX Base must always be used and installed as described in these instructions.

Important – Keep these instructions for future reference. Read these instructions carefully, your child's safety may be affected if you do not follow these instructions.

If you have any further questions regarding the use of this base, please feel free to contact us at:

Simple Parenting  
4B, 12 Shipyard Lane, Quarry Bay,  
Hong Kong,  
Hong Kong  
Phone: (852) 3580-1330  
Email: [info@simpleparenting.co](mailto:info@simpleparenting.co)  
Website: [www.simpleparenting.co](http://www.simpleparenting.co)

Or contact your local distributor at:

2E Vertriebs-GmbH,  
Vogelsanger Str. 78,  
50823 Cologne, Germany  
Customer service: +49 (0)221-690 388 30  
Customer service: [info@2e-vertrieb.de](mailto:info@2e-vertrieb.de)

# 01 / Vital information / warnings.



## **WARNING!**

Read this user guide carefully and save it for future reference. Failure to follow the instructions in the guide could result in serious injury to your child.



## **WARNING!**

Use original accessories and manufacturer approved parts only. Do not make any alterations or additions to the Doona ISOFIX Base.



## **WARNING!**

Always check car fitting list before installation.



## **WARNING!**

In a case of a car accident violent stresses occur. If the product is involved in a car accident we recommend you change it.

**WARNING!**

Do not use this product if any components are broken or missing.

**WARNING!**

Any luggage or other objects liable to cause injuries in the event of a collision shall be properly secured. The Doona ISOFIX Base must always be secured with the support leg, even when not in use.

**WARNING!**

Never leave your child unattended in the Doona Car Seat, both inside and outside of the car.

**WARNING!**

Do not use the Doona ISOFIX Base in seating positions where there is an airbag installed.

**WARNING!**

It is recommended to cover up the Doona ISOFIX Base when the car is parked in the sun, as plastic and metal parts may become extremely hot.

## 02 / Suitability.

The Doona ISOFIX Base is compatible with the Doona Car Seat, and is intended for Rear-Facing use only.

Group: 0+

Weight: Up to 13 kg

### Safety Information:



### WARNING!

Do not use the Doona ISOFIX Base in seating positions where there is an airbag installed.

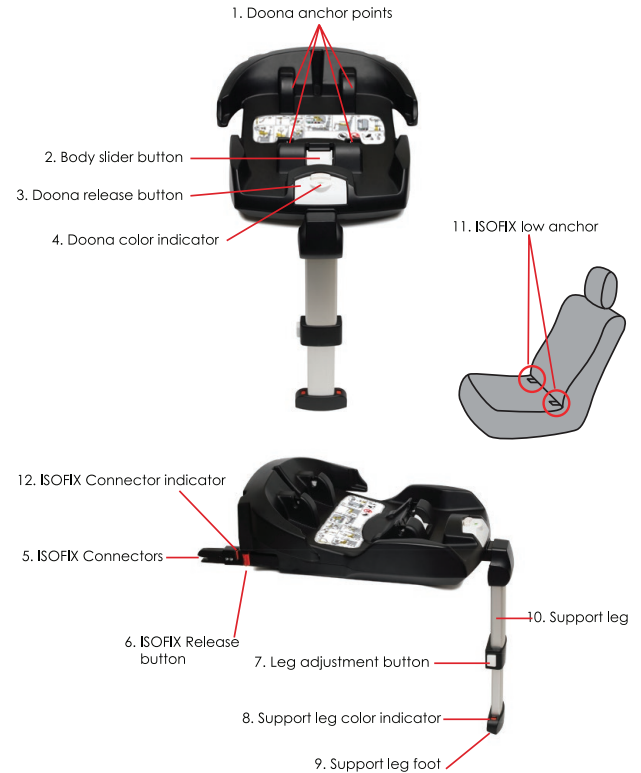
### NOTICE

- This is an ISOFIX CHILD RESTRAINT SYSTEM. It is approved to Regulation No. 44, 04 series of amendments for general use in vehicles fitted with ISOFIX anchorage systems.
- It will fit vehicles with positions approved as ISOFIX positions (as detailed in the vehicle handbook), depending on the category of the child seat and of the fixture.
- The mass group and the ISOFIX size class for which this device is intended is: E (0-13 Kg).

### Certification – Approval Mark



## 03 / Product overview.



# 04 / Use in the vehicle.



Please observe the instructions on the use of child restraint systems and ISOFIX Bases described in your vehicle owner's manual.

**⚠ DO NOT use on a passenger seat with a front airbag!** For seats with side airbags, please observe the instructions in your vehicle owner's manual.

**⚠** The Doona ISOFIX Base may be used only on a forward facing seat equipped with ISOFIX anchor points. Either on the passenger seat or on the back seat, but it should always face backwards. Lock the rear seats that fold down.

**⚠** Correct attachment to the ISOFIX anchor points is essential for the safety of your child.

**⚠** Never use a different installation method other than the one described in the User Guide.

		on seats featuring: ISOFIX fastening points (between seat surface and backrest)	
		support leg must be opened and directed to the front of the car, so when a car seat is installed, it is rear-facing	
		<ul style="list-style-type: none"> <li>• Frontal airbag</li> <li>• Side airbag</li> </ul>	No Yes

**The Doona ISOFIX Base is approved for use with the Doona Car Seat.**

**The Doona ISOFIX Base is compatible for use in cars with approved ISOFIX anchor points (See chapter 7 for Car fitting list).**

If your car is equipped with ISOFIX anchor points, you can install the Doona ISOFIX Base using the ISOFIX connectors in combination with the support leg.

**WARNING!**

In an accident, enormous forces occur. Never try to secure a child on your lap with the vehicle seat belt or by holding onto them.

**WARNING!**

An airbag hitting the Doona Car Seat can cause serious injuries to your child, possibly resulting in death.

This manual includes detailed instructions only regarding installation with a base. For detailed instructions regarding the use with a vehicle 3-point belt without a base, refer to the user guide provided with the Doona Car Seat.

Fastening the Doona Car Seat to the vehicle using the Doona ISOFIX Base is based on semi-universal approval. The seat may only be used with a base in the vehicles detailed in the list of approved vehicle types enclosed with the base. This list is constantly updated. The latest version can be obtained from [www.simpleparenting.co](http://www.simpleparenting.co)

**To protect your vehicle**

Some vehicle seat covers made from sensitive materials (e.g. velour, leather, etc.) may develop wear marks when car seats and bases are used. This can be avoided by placing the Vehicle Seat Protector between the Doona ISOFIX Base and the vehicle seat.

# 05 / Installing the Doona ISOFIX Base in the vehicle.

## 5.1. Securing the Doona ISOFIX Base in your vehicle



**To secure the Doona ISOFIX Base in your vehicle, proceed as follows:**

**Note:** Installation of the Doona ISOFIX Base in the front seat of the vehicle is not recommended, yet possible (subject to the existence of ISOFIX anchors in the front seat). Should you decide to install your Doona ISOFIX Base in the front, make sure to disable the Airbag system.

**IMPORTANT!** Secure any fold down seats.

**Step 1:** Unfold the support leg (#10)

**Step 2:** Make sure the ISOFIX Connectors (#5) are sticking out to the maximum from the Doona ISOFIX main body. In case they are not, lift the body slider button (#2) with one hand, and push the support leg with the other hand towards the body until the ISOFIX Connectors (#5) are exposed and reach maximum length.

**Step 3:** Place the Doona ISOFIX Base with the ISOFIX Connectors (#5) facing the back of the vehicle's seat. Align the ISOFIX Connectors (#5) with the vehicle ISOFIX low anchors (#11). Push the Doona ISOFIX Base from the top of the support leg until the base clicks and locks with both connectors.

**Step 4:** Slide the Doona ISOFIX Base body, until it reaches the back of the seat, and is firmly in place.

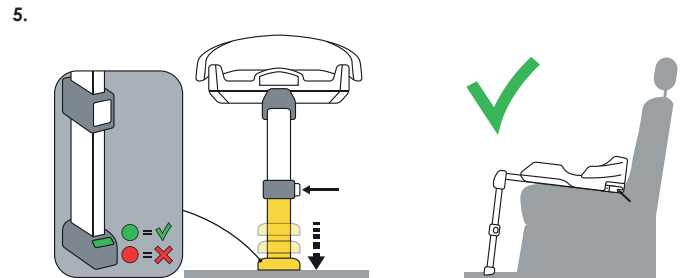
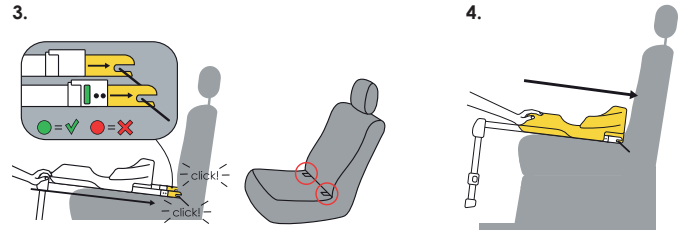
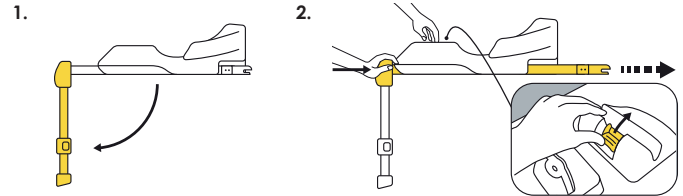
**Step 5:** Adjust the support leg (#10) by pressing the Leg adjustment button (#7) and extending it until it rests firmly on the floor of the vehicle. Make sure the color of support leg color indicator (#8) changes from red to green.

**IMPORTANT! Always** use the support leg (#10) to ensure the safe use of the Doona ISOFIX Base.

**IMPORTANT!** The support leg (#10) must never be suspended in mid-air or supported by other objects.

**IMPORTANT! Under no circumstances should this product be used if the support leg color indicator (#8) remains red.**

**Note:** When the support leg (#10) rests firmly on the floor of the vehicle and the support leg color indicator (#8) is green, assure that the gap between the Doona ISOFIX Base body and the vehicle seat is minimal.





## 5.2. Removing the Doona ISOFIX Base from your vehicle

**Step 1:** Make sure the Doona Infant Car Seat is not connected to the ISOFIX Base. In case it is connected, please remove it first.

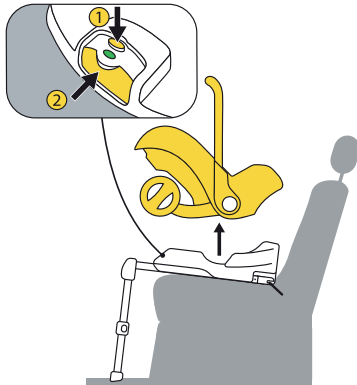
Detailed description for removing the Doona Infant Car Seat from the ISOFIX Base can be found in chapter 6.2.

**Step 2:** Pull the ISOFIX release button (#6) on each side of the Doona ISOFIX Base, and pull the ISOFIX Base body away from the vehicle's ISOFIX low anchors, until the Doona ISOFIX Base is completely disconnected.

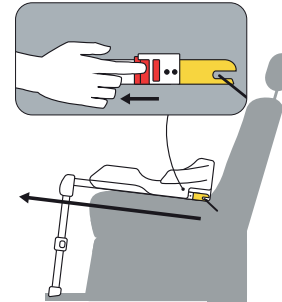
**Step 3:** Fold the support leg (#10).

**Note:** Do not leave the Doona ISOFIX Base unattached inside the vehicle. Any luggage or other objects liable to cause injuries in the event of a collision shall be properly secured.

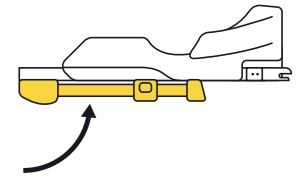
1.



2.



3.



# 06 / Installing and removing of the Doona Car Seat from the Doona ISOFIX Base.

## 6.1. Securing the Doona Car Seat on the Doona ISOFIX Base

After securing the Doona ISOFIX Base in your vehicle (See chapter 5 for instructions), you may now easily connect and remove the Doona Car Seat from your vehicle. To do so, follow the steps below:

**IMPOTRANT! Before installing the Doona car seat on the Doona ISOFIX Base, make sure that the Doona release button (#3) is pressed in, and the Doona color indicator (#4) is red. It should turn green only when the Doona car seat was correctly installed on the Doona ISOFIX Base. In case the Doona color indicator (#4) is Green before installing the Doona Car Seat, You should press down the small top button, and while it is pressed down push the entire Doona release button (#3) forward until it clicks in place and the Doona color indicator (#4) turns red.**

**Step 1:** When the Doona is in car seat mode (wheels are folded), and the handle is in its upright position B, place the Doona Car Seat facing the back of the vehicle (opposite the driving direction).

**Note:** For further information about folding the Doona Car Seat and adjusting the handle, please refer to the Doona Car Seat User Guide.

**Step 2:** Position the Doona Car Seat and align its 2 metal bars (See image below) above the Doona anchor points (#1) in the Doona ISOFIX Base. Slide the Doona Car Seat into the Doona anchor points (#1) until you hear a 'click' sound and it is locked in place.

**Step 3:** Check the Doona color indicator (#4) – it should turn from red to green once the Doona Car Seat is properly placed and locked successfully.

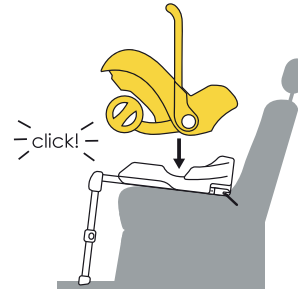
**Step 4:** Check that the Doona is secure by shaking the handle. The Doona should stay fixed in place.

**Step 5:** Rotate the handle to position C, for full anti-rebound protection.

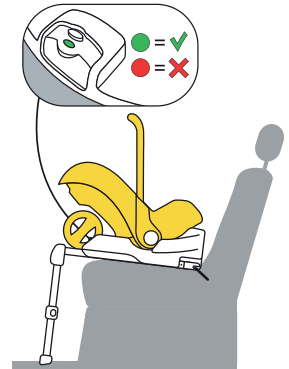
1.



2.

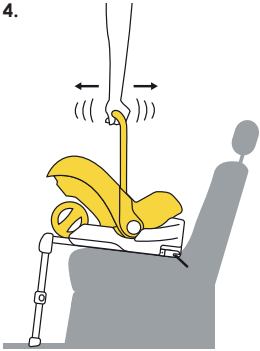


3.

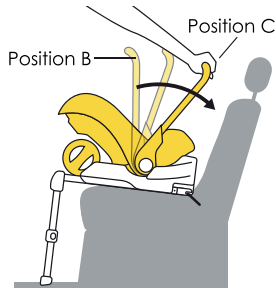


(continues on next page)

4.



5.



Doona metal bars

## 6.2. Removing the Doona Car Seat from the Doona ISOFIX Base

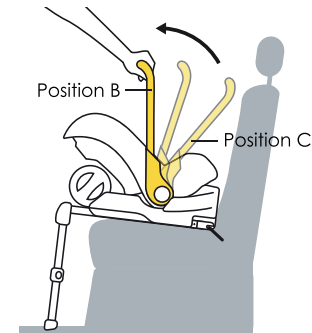
**Step 1:** Rotate the Doona Car Seat handle from position C to upright position B.

**Step 2:** Hold the Doona Car Seat handle with one hand, and press the Doona release button (#3) with the other hand. You should press down the small top button, and while it is pressed down push the entire Doona release button (#3) forward until it clicks in place and the Doona color indicator (#4) turns red. While pressing the Doona release button (#3), tilt the Doona toward your body until it is released from the Doona anchor points (#1). Once the Doona Car Seat is disconnected from the base, lift the Doona and place it outside of the car.

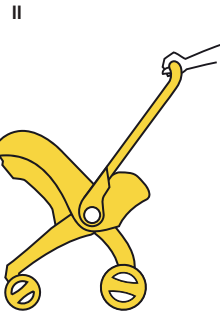
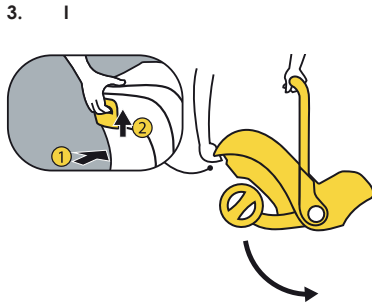
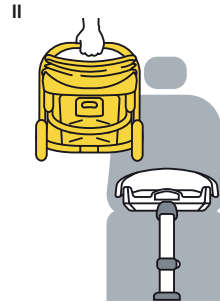
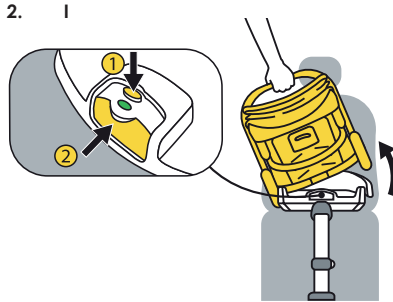
**Step 3:** Unfold the Doona Car Seat wheels, rotate and extend the handle to 'stroller mode' and you are ready to go!

**Note:** For further information about unfolding the Doona Car Seat and adjusting the handle, please refer to the Doona Car Seat User Guide.

1.



(continues on next page)



## 07 / Car fitting list.

To obtain further information on fitting the Doona ISOFIX Base in specific cars, please contact us at: [info@simpleparenting.co](mailto:info@simpleparenting.co) or visit our website: [www.simpleparenting.co](http://www.simpleparenting.co)

## 08 / Care instructions.



### ASSURING PROPER FUNCTION

- In an accident, at a collision speed above 10 km/h, the Doona ISOFIX Base could suffer damage which is not necessarily visible. In this case, the ISOFIX Base must be replaced. Please dispose of it properly.
- Regularly check all important parts for damage. Ensure the correct operation of all mechanical components.
- Should the Doona ISOFIX Base be damaged (for example after dropping it) it must be inspected.
- Never use spare parts or accessories other than those supplied or approved by the manufacturer – The Doona ISOFIX Base is compatible only with the Doona Car Seat.

### 8.1. Cleaning

It is recommended to clean the Doona ISOFIX Base periodically, in order to keep it properly functioning.

Always remove the Doona Car Seat before cleaning the Doona ISOFIX Base. It is also recommended to remove the Doona ISOFIX Base from the car in order to clean it properly.

To clean the ISOFIX Base, sponge clean or rinse using warm water, soap and a rag. DO NOT use any solvents or lubrication. Using anything other than soapy water can cause the moving parts to malfunction.

## 09 / Two-year warranty.

We guarantee that the Doona ISOFIX Base was manufactured in accordance with the European safety standards and regulations, and it meets the highest standards of quality.

For the Doona ISOFIX Base we provide a 2-year warranty against manufacturing or material defects. The warranty period is effective from the day of purchase. As proof of purchase we ask that you fill out the Warranty Card and retain it for the whole term of the warranty period, together with your sales receipt.

In case of a warranty claim, the Warranty Card must be returned together with the product to your local distributor.

Please also register your Doona ISOFIX Base online at: [www.simpleparenting.co](http://www.simpleparenting.co)

The Warranty will cover a Doona ISOFIX Base which has been handled properly.

The warranty does not apply in the following cases:

- The product shows normal signs of wear and tear.
- Damage occurs as a result of exposing the product to excessive stress.
- Damage occurs as a result of inappropriate or improper use.

- When the product has been used for a purpose other than that specified in this user manual.

In the event of a warranty claim, please contact us directly at:  
info@simpleparenting.co

# 10 / Warranty card.

Warranty card:

Name: \_\_\_\_\_

Address: \_\_\_\_\_

Post code: \_\_\_\_\_

City/Town: \_\_\_\_\_

State: \_\_\_\_\_

Country: \_\_\_\_\_

Telephone no. (including area code): \_\_\_\_\_

E-mail address: \_\_\_\_\_

Doona ISOFIX Base serial no. : \_\_\_\_\_

Store where product was purchased: \_\_\_\_\_

\_\_\_\_\_

Date of purchase: \_\_\_\_\_